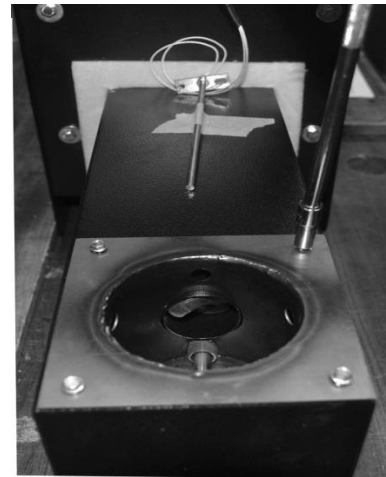


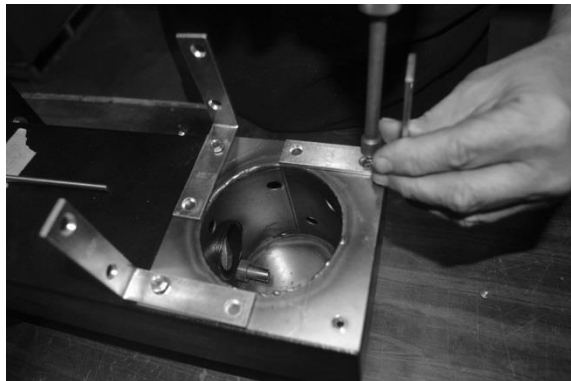
## Attaching a Heat Diffuser



Buy a set of 4- 3" L-brackets and (4) 8-18 or 10-16 x 1/2" screws at your local hardware store. Or use the same screws that secure the burn pot.



**Once the hopper has been attached to the drum,** remove the (4) screws located on top of the burn pot.



Arrange the (4) L-brackets as shown and replace screws with the 8-18 or 10-16 x 1/2" screws.



Place the heat diffuser on top of the L brackets. *You can also use any 10" X 10" piece of 13 gauge steel for your diffuser.*