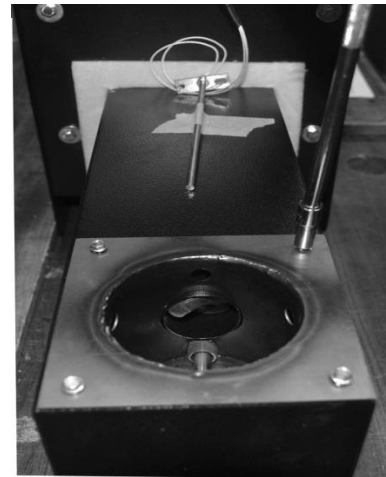


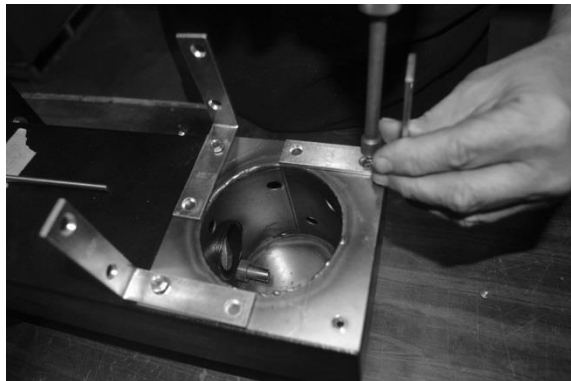
Attaching a Heat Diffuser



Buy a set of 4- 3" L-brackets and (4) 8-18 or 10-16 x 1/2" screws at your local hardware store. Or use the same screws that secure the burn pot.



Once the hopper has been attached to the drum, remove the (4) screws located on top of the burn pot.



Arrange the (4) L-brackets as shown and replace screws with the 8-18 or 10-16 x 1/2" screws.



Place the heat diffuser on top of the L brackets. *You can also use any 10" X 10" piece of 13 gauge steel for your diffuser.*